

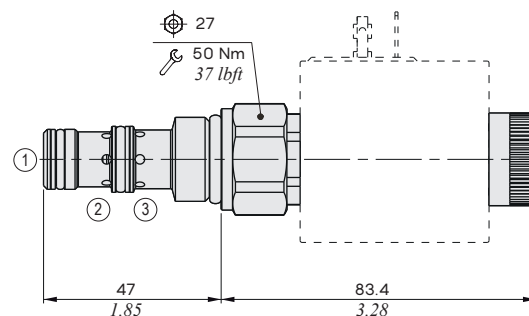
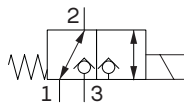
EL10C type directional solenoid valves – 3 way / 2 positions

- Poppet type
- Direct acting with on-off solenoid

Technical specifications and diagrams are measured with mineral oil of 46 cSt viscosity at 40°C (104°F) temperature.

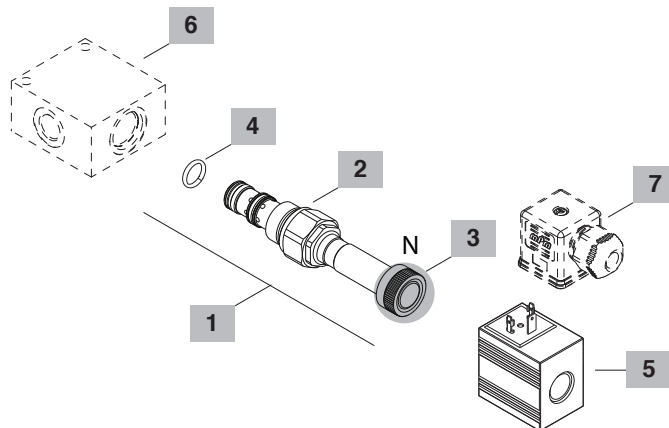
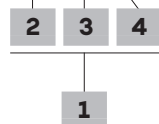
EL10C		
Nominal flow		20 l/min (5.28 US gpm)
Max. pressure		210 bar (3050 psi)
Oil leakage	at 210 bar (3050 psi)	0.25 cm ³ /min (0.015 in ³ /min)
Fluid		mineral based or synthetic hydraulic fluid with lubricating properties
Viscosity		10-200 cSt
Max level of contamination		18/16/13 ISO4406
Fluid temperature	with NBR seals+PTFE with FPM seals	from -25°C (-13°F) to 90°C (194°F) from -20°C (-4°F) to 110°C (230°F)
Environmental temp. for working conditions		from -20°C (-4°F) to 60°C (140°F)
Cavity		SAE 10/3
Coil type*		BQ16
Nominal voltages		12VDC ± 10%
Power rating		30 W
Weight		0.27 kg (0.59 lb)

NOTE - For different conditions, please contact Walvoil Sales Dpt. - *For coils further features see from page 201.



Ordering codes and description composition

EL10C/ 1 0 N B



1 Cartridges

TYPE	CODE	DESCRIPTION
SAE cavity 10/3		
EL10C/10NB	OEL10002008	Without emergency

2 Spool

TYPE	DESCRIPTION
1	Spool 1

3 Emergency

TYPE	DESCRIPTION
N	Without emergency

4 Seals

TYPE	DESCRIPTION
B	NBR (Buna)+PTFE o-ring seals, std configuration
V	FPM (Viton) o-ring seals, contact Sales Dept

5 Coils

TYPE	CODE	DESCRIPTION
BQ16 12VDC	4SL8000121	12VDC-ISO4400 coil

For complete coils list see page 201

6 Valve body

TYPE	CODE	DESCRIPTION
SAE10/3-SAE8	3CC1030K11	Aluminium body for cavity 10 valve, SAE8 std thread

Note: aluminium body can stand up to 210 bar (3050 psi)
For steel bodies or different threading see from page 210

7 Connector

TYPE	CODE	DESCRIPTION
ISO4400	4CN1009995B	Connector

For complete connectors list see from page 201

Rating diagrams

Pressure drop vs. flow

