

EL10C type directional solenoid valves – 3 way / 2 positions

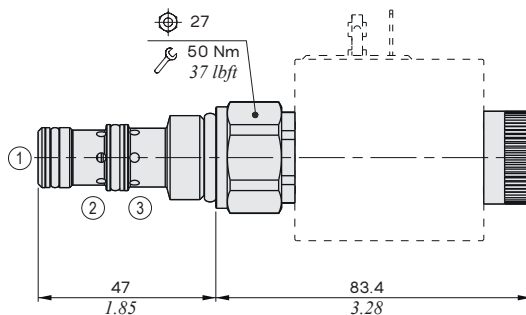
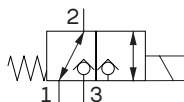
- Poppet type
- Direct acting with on-off solenoid

Technical specifications and diagrams are measured with mineral oil of 46 cSt viscosity at 40°C (104°F) temperature.

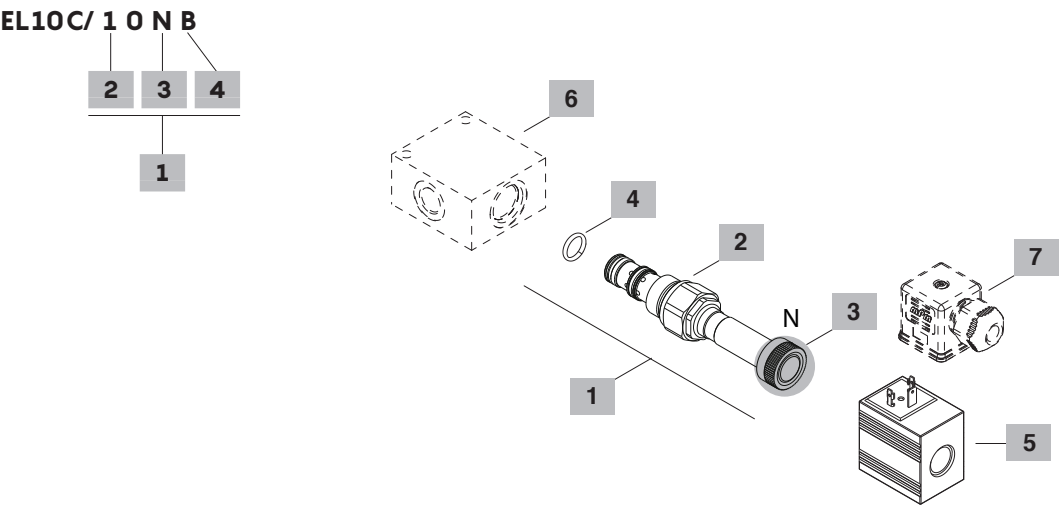
EL10C

Nominal flow		20 l/min (5.28 US gpm)
Max. pressure		210 bar (3050 psi)
Oil leakage	at 210 bar (3050 psi)	0.25 cm³/min (0.015 in³/min)
Fluid		mineral based or synthetic hydraulic fluid with lubricating properties
Viscosity		10–200 cSt
Max level of contamination		18/16/13 ISO4406
Fluid temperature	with NBR seals+PTFE with FPM seals	from -25°C (-13°F) to 90°C (194°F) from -20°C (-4°F) to 110°C (230°F)
Environmental temp. for working conditions		from -20°C (-4°F) to 60°C (140°F)
Cavity		SAE 10/3
Coil type*		BQ16
Nominal voltages		12VDC ± 10%
Power rating		30 W
Weight		0.27 kg (0.59 lb)

NOTE – For different conditions, please contact Walvoil Sales Dpt. – *For coils further features see from page 201.



Ordering codes and description composition



1 Cartridges			5 Coils		
TYPE	CODE	DESCRIPTION	TYPE	CODE	DESCRIPTION
SAE cavity 10/3			BQ16 12VDC		
EL10C/10NB	OEL10002008	Without emergency	For complete coils list see page 201		

2 Spool		6 Valve body		
TYPE	DESCRIPTION	TYPE	CODE	DESCRIPTION
1	Spool 1	SAE10/3-G 3/8 3CC1030C11 Aluminium body for cavity 10 valve, G 3/8 std thread		
		Note: aluminium body can stand up to 210 bar (3050 psi) For steel bodies or different threading see from page 210		

3 Emergency		7 Connector		
TYPE	DESCRIPTION	TYPE	CODE	DESCRIPTION
N	Without emergency	ISO4400 4CN1009995B Connector		
		For complete connectors list see from page 201		

4 Seals	
TYPE	DESCRIPTION
B	NBR (Buna)+PTFE o-ring seals, std configuration
V	FPM (Viton) o-ring seals, contact Sales Dept

Rating diagrams

