

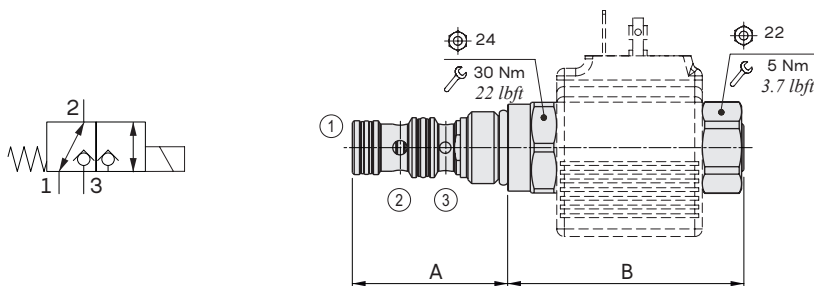
EL08B type directional solenoid valves – 3 way / 2 positions

- Poppet type
- Direct acting with on-off solenoid
- Different types of emergencies available
- Suitable for low pressure: 100 bar (1450 psi)

Technical specifications and diagrams are measured with mineral oil of 46 cSt viscosity at 40°C (104°F) temperature.

EL08B		
Nominal flow		10 l/min (2.64 US gpm)
Max. pressure		250 bar (3600 psi)
Oil leakage	at 210 bar (3050 psi)	0.25 cm ³ /min (0.015 in ³ /min)
Fluid	mineral based or synthetic hydraulic fluid with lubricating properties	
Viscosity		10-200 cSt
Max level of contamination		18/16/13 ISO4406
Fluid temperature	with NBR seals+Polyurethane with FPM seals	from -25°C (-13°F) to 90°C (194°F) from -20°C (-4°F) to 110°C (230°F)
Environmental temp. for working conditions		from -20°C (-4°F) to 60°C (140°F)
Cavity		SAE 08/3
Coil type*		BER
Nominal voltages		12VDC - 24VDC ± 10%
Power rating		19 W
Weight		0.16 kg (0.35 lb)

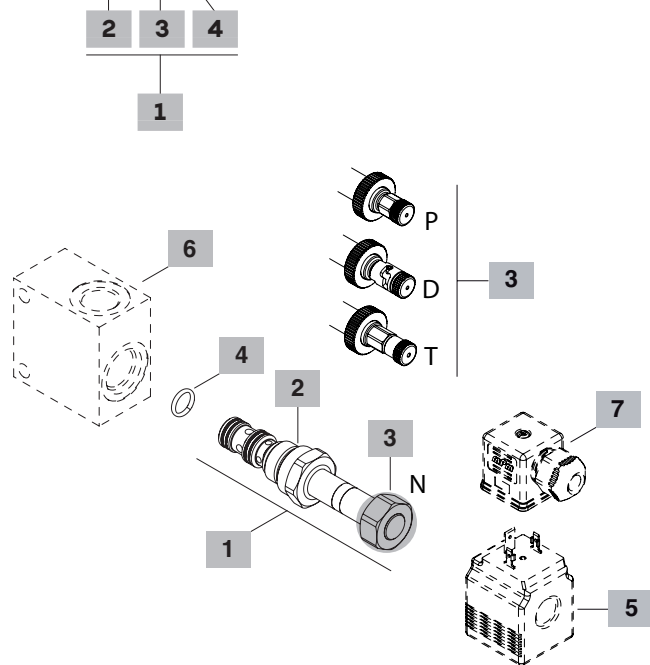
NOTE - For different conditions, please contact Walvoil Sales Dpt. - *For coils further features see from page 201.



Valve type	A		B							
			N without emergency		T screw		P push button		D push type with detent	
	mm	in	mm	in	mm	in	mm	in	mm	in
EL08B	41.1	1.62	62.5	2.46	85.4	3.36	85.4	3.36	88.1	3.47

Ordering codes and description composition

EL08B/ 1 0 N B



1 Cartridges

TYPE	CODE	DESCRIPTION
EL08B/10NB	OEL08002009	Without emergency
EL08B/10PB	OEL08002006	With push-button emergency
EL08B/10TB	OEL08002007	Screw type emergency
EL08B/10DB	OEL08002008	Push type with detent emergency

2 Spool

TYPE	DESCRIPTION
1	Spool 1

3 Emergency

TYPE	DESCRIPTION
N	Without emergency
P	Push-button emergency
T	Screw type emergency
D	Push type with detent emergency

4 Seals

TYPE	DESCRIPTION
B	NBR (Buna)+Polyurethane o-ring seals, std configuration
V	FPM (Viton) o-ring seals, contact Sales Dept

5 Coil

TYPE	CODE	DESCRIPTION
BER12VDC	4SLE001200A	12VDC-ISO4400 coil

For complete coils list see page 201

6 Valve body

TYPE	CODE	DESCRIPTION
SAE08/3-SAE6	3CC0830J11	Aluminium body for cavity 08 valve, SAE6 std thread

Note: aluminium body can stand up to 210 bar (3050 psi)
For steel bodies or different threading see from page 210

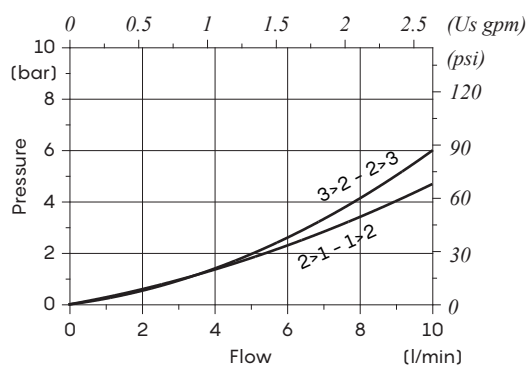
7 Connector

TYPE	CODE	DESCRIPTION
ISO4400	4CN1009995B	Connector

For complete connectors list see from page 201

Rating diagrams

Pressure drop vs. flow



Performance limit

