

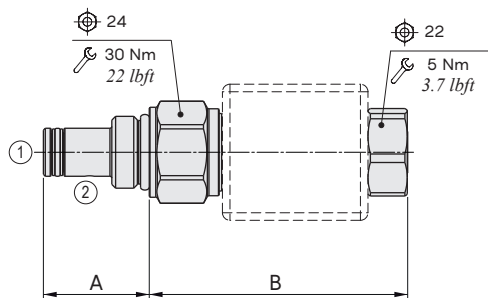
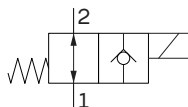
**EB08M type**  
**directional solenoid valves – 2 way/2 positions**

- Poppet type
- Direct acting with on-off solenoid
- Different types of emergencies available
- Configuration normally open

Technical specifications and diagrams are measured with mineral oil of 46 cSt viscosity at 40°C (104°F) temperature.

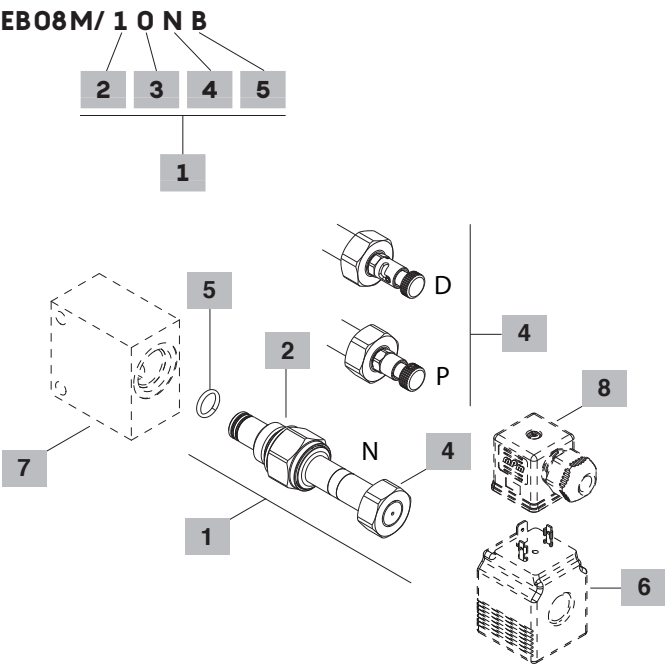
EB08M		
Nominal flow		2 l/min (0.53 US gpm)
Max. pressure		350 bar (5100 psi)
Oil leakage	at 210 bar (5100 psi)	0.25 cm³/min (0.015 in³/min)
Fluid		mineral based or synthetic hydraulic fluid with lubricating properties
Viscosity		10–200 cSt
Max level of contamination		18/16/13 ISO4406
Fluid temperature	with NBR seals+Polyurethane with FPM seals	from -25°C (-13°F) to 90°C (194°F) from -20°C (-4°F) to 110°C (230°F)
Environmental temp. for working conditions		from -20°C (-4°F) to 60°C (140°F)
Cavity		SAE 8/2
Coil type*		BER
Nominal voltages		12VDC - 24VDC ± 10%
Power rating		19 W
Weight		0.399 kg (0.88 lb)

NOTE – For different conditions, please contact Walvoil Sales Dpt. – \*For coils further features see from page 201.



Valve type	A		B					
			N without emergency		P push button		D push type with detent	
	mm	in	mm	in	mm	in	mm	in
EB08M	28	1.10	68.4	2.69	91.3	3.59	94	3.7

Ordering codes and description composition



1 Cartridges		
TYPE	CODE	DESCRIPTION
<b>SAE cavity 08/2</b>		
EB08M/10NB	0EB08002001	(N.O.) without emergency
EB08M/1HDB	0EB08002000	As previous one, push type with detent emergency
EB08M/10PB	0EB08002002	As previous one, push button emergency

2 Spool	
TYPE	DESCRIPTION
1	Normally open configuration

3 Anti tampering arrangement	
TYPE	DESCRIPTION
0	Without anti tampering arrangement
H	With anti tampering arrangement

4 Emergency	
TYPE	DESCRIPTION
N	Without emergency
P	Push button emergency
D	Push type with detent
Note: for configurations with different emergency types contact Sales Dept.	

5 Seals	
TYPE	DESCRIPTION
B	<b>NBR (Buna)+Polyurethane</b> o-ring seals, std configuration
V	<b>FPM (Viton)</b> o-ring seals, contact Sales Dept

6 Coils		
TYPE	CODE	DESCRIPTION
BER12VDC	4SLE001200A	12VDC-ISO4400 coil
For complete coils list see page 201		

7 Valve body		
TYPE	CODE	DESCRIPTION
SAE08/2-G 1/4	3CC0820B11	Aluminium body for cavity 08 valve, G 1/4 std thread
Note: aluminium body can stand up to 210 bar (3050 psi)		
For steel bodies or different threading see from page 208		

8 Connector		
TYPE	CODE	DESCRIPTION
ISO4400	4CN1009995B	Connector
For complete connectors list see from page 201		

Rating diagrams

